

## Handbook for DeviceConfig Software Tool in connection with D2W – Device to Web



H:\Produkte\D2W\d2w-Config\_Ba--00-en.docx

NIVUS GmbH  
Im Täle 2  
D – 75031 Eppingen  
Tel. 0 72 62 / 91 91 - 0  
Fax 0 72 62 / 91 91 - 999  
E-Mail: info@nivus.com  
Internet: www.nivus.de

**NIVUS AG**

Hauptstrasse 49  
8750 Glarus, Switzerland  
Phone: +41 (0)55 / 645 20 66  
Fax: +41 (0)55 / 645 20 14  
E-Mail: [swiss@nivus.com](mailto:swiss@nivus.com)  
Internet: [www.nivus.de](http://www.nivus.de)

**NIVUS Sp. z o. o**

Ul. Hutnicza 3 / B-18  
81-212 Gdynia, Poland  
Phone: +48 (0)58 / 760 20 15  
Fax: +48 (0)58 / 760 20 14  
E-Mail: [poland@nivus.com](mailto:poland@nivus.com)  
Internet: [www.nivus.pl](http://www.nivus.pl)

**NIVUS Austria**

Mühlbergstraße 33B  
3382 Loosdorf, Austria  
Phone: +43 (0)2754 567 63 21  
Fax: +43 (0)2754 567 63 20  
E-Mail: [austrias@nivus.com](mailto:austrias@nivus.com)  
Internet: [www.nivus.de](http://www.nivus.de)

**NIVUS Middle East (FZE)**

Building Q 1-1 ap. 055  
P.O. Box: 9217  
Sharjah Airport International Free Zone  
Phone: +971 6 55 78 224  
Fax: +971 6 55 78 225  
E-Mail: [Middle-East@nivus.com](mailto:Middle-East@nivus.com)  
Internet: [www.nivus.com](http://www.nivus.com)

**NIVUS France**

14, rue de la Paix  
67770 Sessenheim, France  
Phone: +33 (0)388071696  
Fax: +33 (0)388071697  
E-Mail: [france@nivus.com](mailto:france@nivus.com)  
Internet: [www.nivus.fr](http://www.nivus.fr)

**NIVUS Korea Co. Ltd.**

411 EZEN Techno Zone,  
1L EB Yangchon Industrial Complex,  
Gimpo-Si  
Gyeonggi-Do 415-843  
Phone: +82 31 999 5920  
Fax: +82 31 999 5923  
E-Mail: [korea@nivus.com](mailto:korea@nivus.com)  
Internet: [www.nivus.com](http://www.nivus.com)

**NIVUS U.K.**

Wedgewood Rugby Road  
Weston under Wetherley  
Royal Leamington Spa  
CV33 9BW, Warwickshire  
Phone: +44 (0)1926 632470  
E-Mail: [info@nivus.com](mailto:info@nivus.com)  
Internet: [www.nivus.com](http://www.nivus.com)

**NIVUS U.K.**

1 Arisaig Close  
Eaglescliffe  
Stockton on Tees  
Cleveland, TS16 9EY  
Phone: +44 (0)1642 659294  
E-Mail: [info@nivus.com](mailto:info@nivus.com)  
Internet: [www.nivus.com](http://www.nivus.com)

<b>1. Installing the Software .....</b>	<b>4</b>
1.1 Installation of D2W Device Config.....	4
1.2 Connect to USB .....	4
<b>2. Using D2W Device Config. ....</b>	<b>5</b>
2.1 Selecting a NivuLog instrument .....	5
2.2 User Configuration .....	5
2.3 Instrument analysis Log .....	5
2.4 Basic settings Instrument .....	6
2.5 Connection settings GPRS.....	6
2.6 Zero point .....	6
2.7 2-point adjustment Trim .....	7
2.8 Download Service .....	7
2.9 Sync .....	8
2.10 Export .....	8
2.11 Magnifying glass .....	8
2.12 Disconnect .....	8

## 1. Installing the Software

### 1.1 Installation of D2W Device Config.

After inserting the provided CD, you are forwarded to the installation program. If the installation process does not start automatically (e.g. Auto StartUp deactivated), you may also run the installation program manually...

**Start à run program à { CDROM}\SetupmyDatenetDeviceConfig.exe**

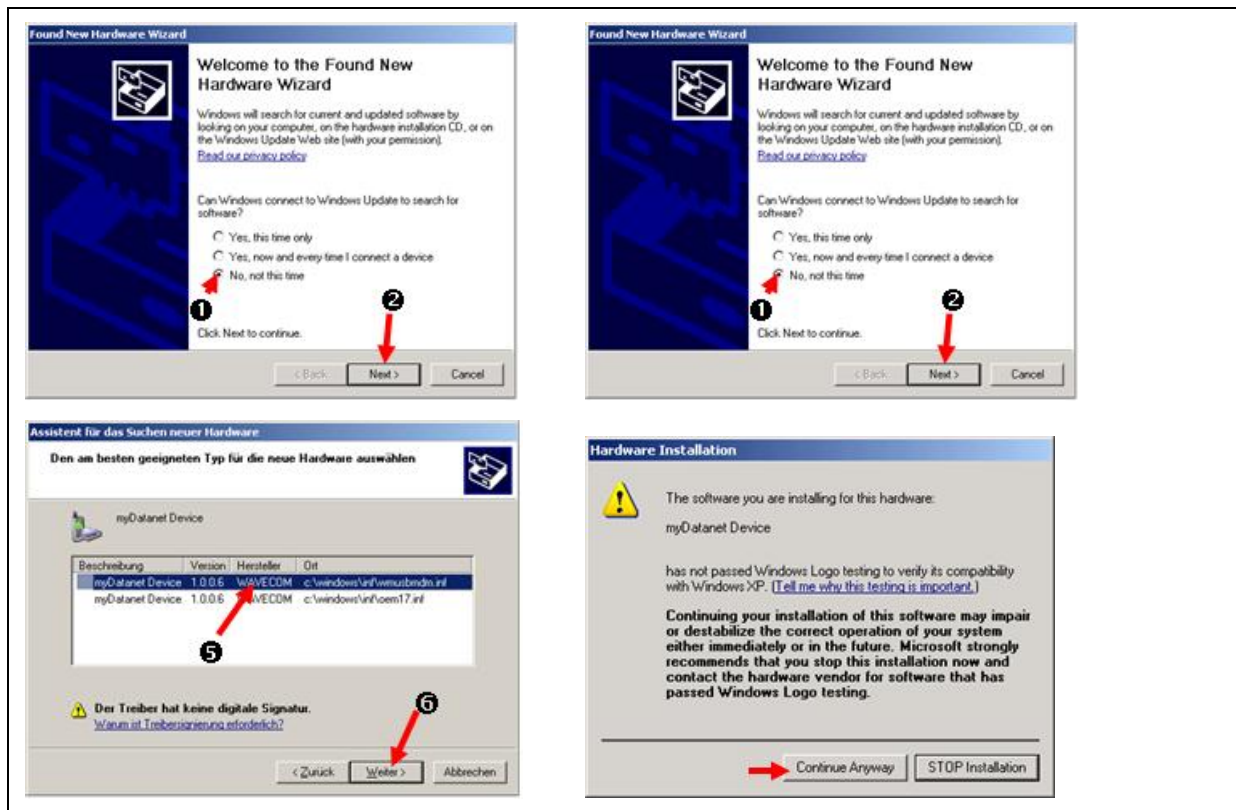
Install D2W Device Config.

You need Windows-Administrator rights for driver installation!

### 1.2 Connect to USB

After connecting the D2W device to the USB-Port the first time, the Windows assistant will automatically forward you to the installation screen. If the installation assistant does not appear, you may also install the driver using the hardware manager ...

**Start à Control Panel à Hardware**

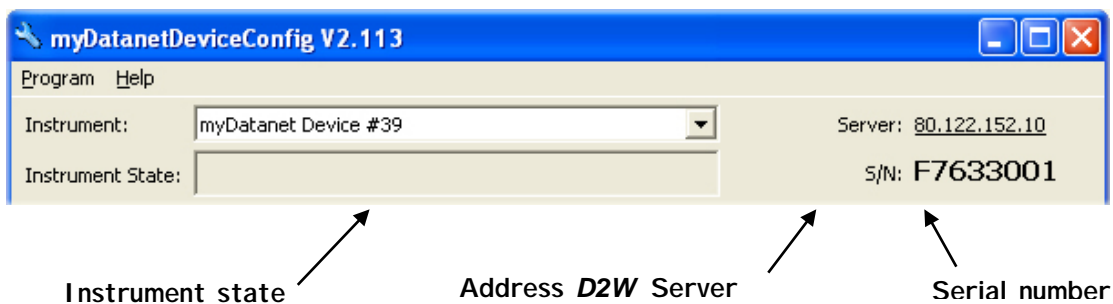


## 2. Using D2W Device Config.

- Aware that other programs (e.g. mobile phone software) may capture the COM port of NivuLog instruments! In this case communication between computer and instrument is not possible!
- Remember to save changes before disconnecting the instrument!
- The current version can be downloaded from the Service Register of D2W.

### 2.1 Selecting a NivuLog instrument

As soon as the NivuLog instrument is connected to the USB port, the instrument is automatically detected and configurations are updated immediately.  
Additional user permissions may be unlocked or a log-file can be opened using the program menu.



### 2.2 User Configuration

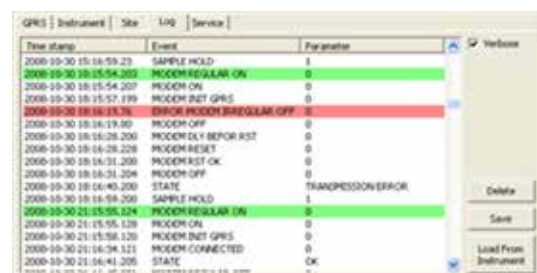
Site currently allocated site  
Meas. Int. period for the automatic measuring  
Transfer Int. period for the automatic data transmission



### 2.3 Instrument analysis Log

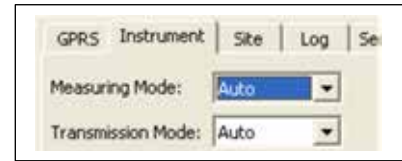
Load from... Download log file for analysis purposes  
Delete delete log entries  
Save save log entries

Double click brings a hint on top.  
Details shows more detailed log entries.



## 2.4 Basic settings Instrument

Measuring Mode state of the automatic measuring  
Transmission Mode state of the automatic data transmission



## 2.5 Connection settings GPRS

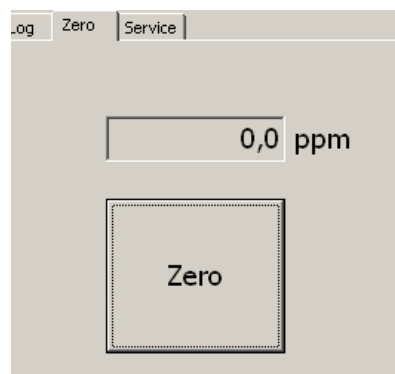
SIM-Tarif predefined D2W SIM tariff  
Overrule Overrule SIM tariff (for own SIM cards)  
Provider GPRS configuration set (APN, user name, password)  
PIN PIN code (any number if PIN is deactivated)  
Net Lock GSM Network locks (MCC and MNC required)



## 2.6 Zero point

(not available for all device classes)

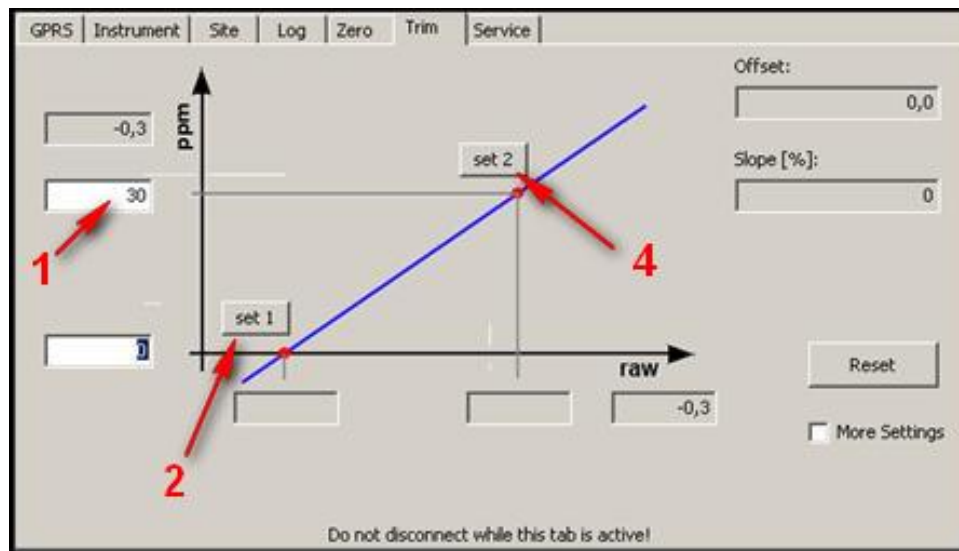
Zero allows an easy compensation of the starting point drift  
Zero allows to easily compensate the working point drift by applying an user offset to the measurement value. This function is unlocked after expiring the sensor's warm-up time.



## 2.7 2-point adjustment Trim

(only available with extended permissions UL4; not available for all instrument classes)

The trim features a compensation of the sensor's aging. The settings are automatically saved when the operation point values are fixed by the set buttons. This function is unlocked after expiring the sensor's warmup time.



0. The instrument has to be at least 24h in H<sub>2</sub>S- and solvent-free environment.
1. The defined concentration has to match the calibration gas.
2. Adjust the zero point using the Set 1 button.
3. Subsequently the sensor has to be expired for 5 min with H<sub>2</sub>S gas at a flow rate of 500 ml/min.
4. Adjust the second calibration point using the Set 2 button.

Offset and Slope can also be entered manually, after enabling the according settings by checking More Settings.

## 2.8 Download Service

Please download a pdf document of the operation manual.



## 2.9 Sync

Synchronisation with the instrument.



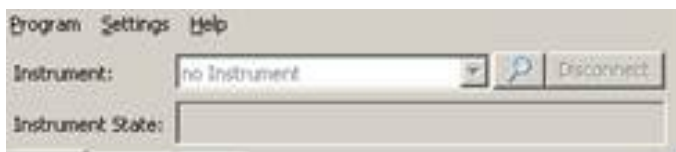
## 2.10 Export

Export data from a data base to a file.



## 2.11 Magnifying glass

The magnifying glass is only for connecting NivuLog H2S Mini



## 2.12 Disconnect

The instrument must be “ejected” with the >Disconnect < Button. Do not simply disconnect the instrument