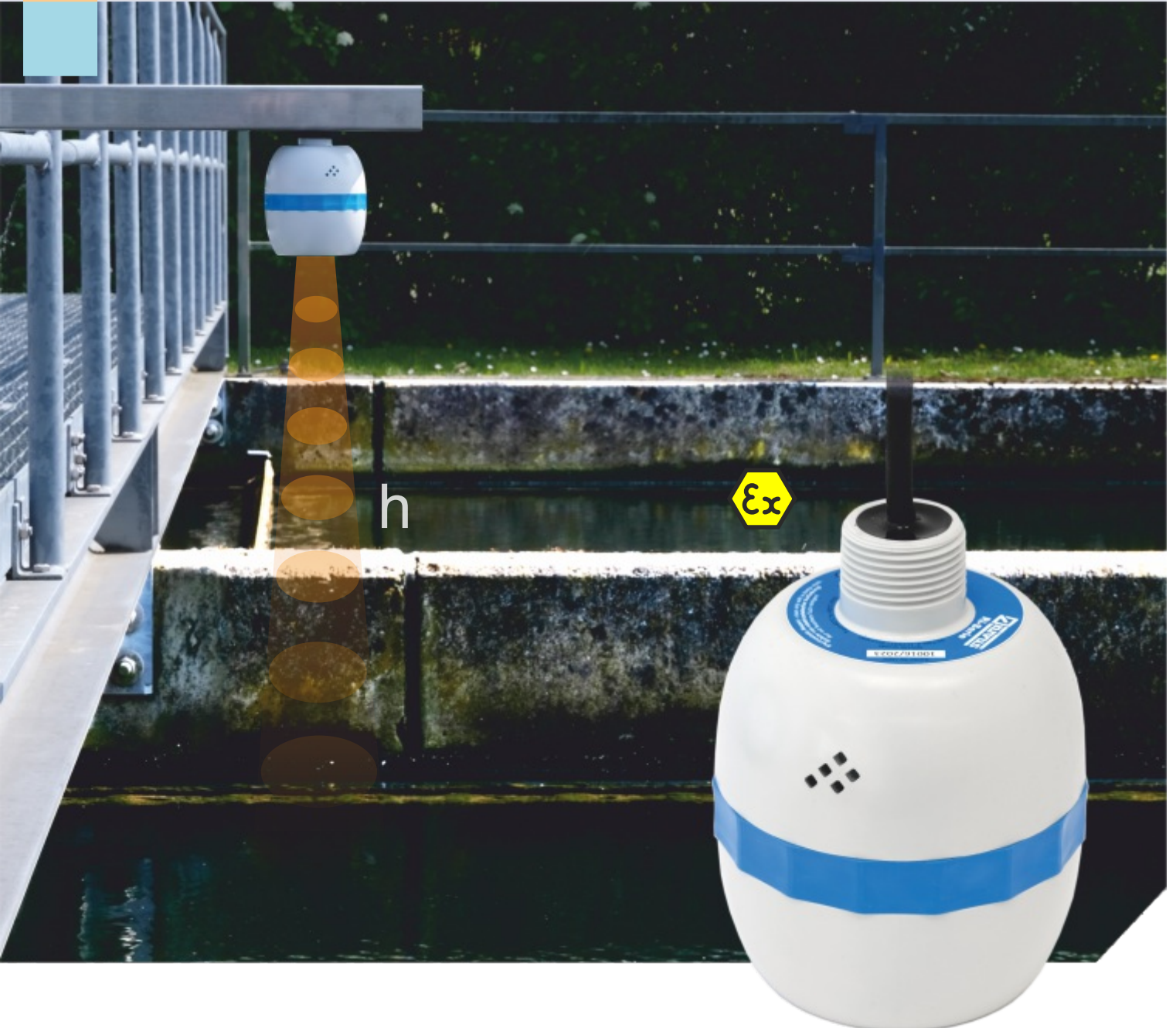


measure analyse optimise

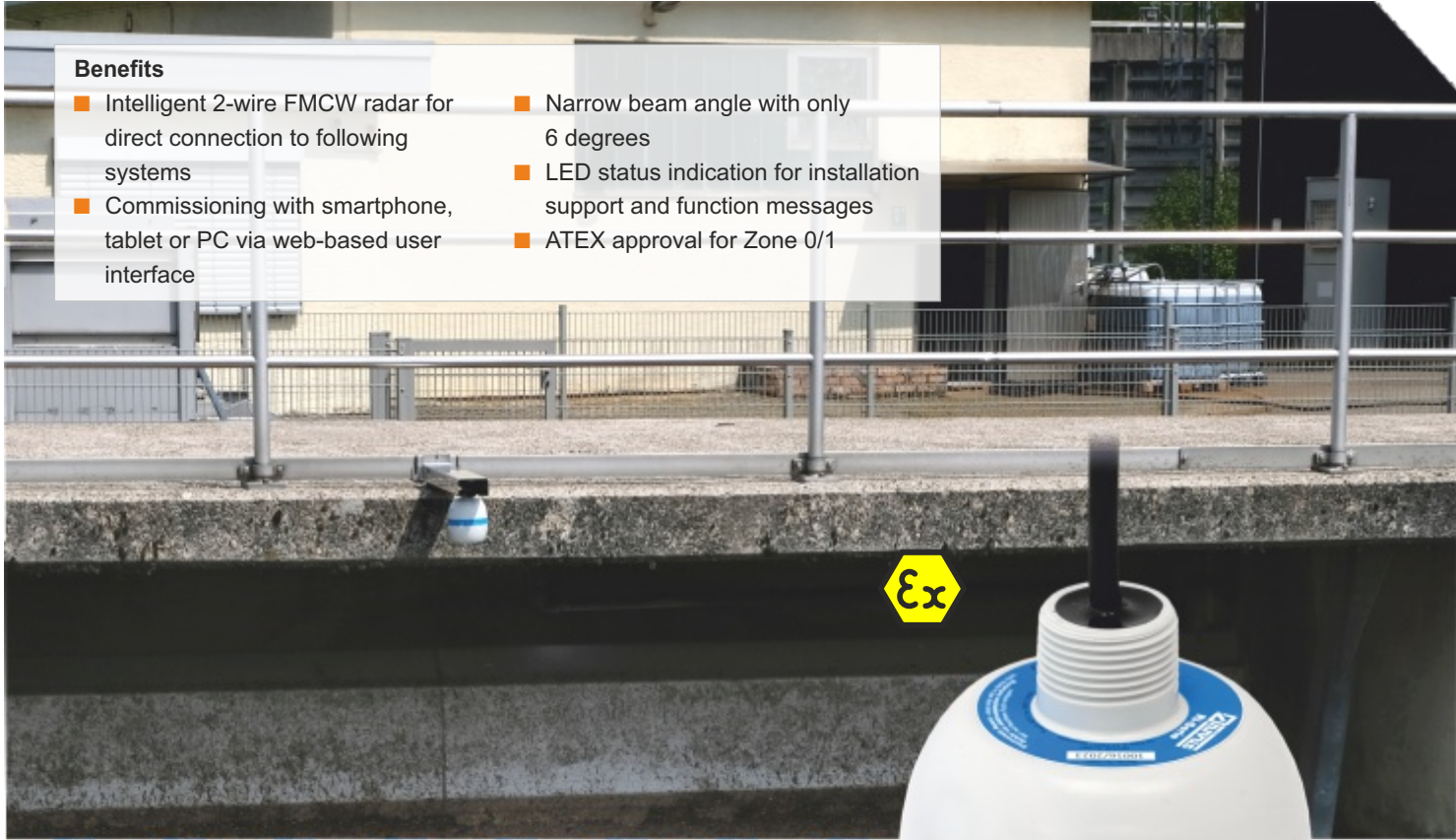


Ri-Series Accurate and reliable level measurement with radar technology



Benefits

- Intelligent 2-wire FMCW radar for direct connection to following systems
- Commissioning with smartphone, tablet or PC via web-based user interface
- Narrow beam angle with only 6 degrees
- LED status indication for installation support and function messages
- ATEX approval for Zone 0/1



Reliable and robust

The Ri-Series 2-wire sensors with FMCW radar technology provide accurate monitoring of liquids in standard and critical measurement applications, ensure absolute operational reliability and minimise costs through very low maintenance and service requirements. Highest reliability for level measurements under the most difficult environmental conditions due to very narrow beam angle and protection class IP68.



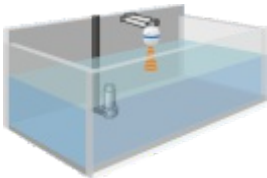
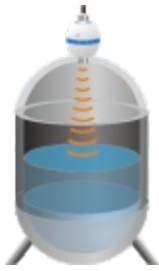
Typical Applications

- **Wastewater** Stormwater overflow tanks and sewer storage spaces, sedimentation tanks, pump stations, screening systems, flow measurements, volume measurements in tanks, container monitoring, irrigation systems
- **Drinking Water** Tank level measurements, water treatment, seawater desalination plants, level measurements
- **Flood Protection** Stormwater retention basins, levels with remote data transmission, surface water bodies
- **Power Generation** Cooling water circuits, hydropower plants
- **Industry** Containers and basins of any kind

Communication

Unique and secure web-based user interface via Bluetooth

With a web-based user interface, the Ri sensor offers a simple and convenient way to change parameters, display echo curves and change the Bluetooth range. This web app is accessible via any browser on any operating system (Windows, Android or iOS). Compared to a conventional app, no software and associated updates need to be installed.

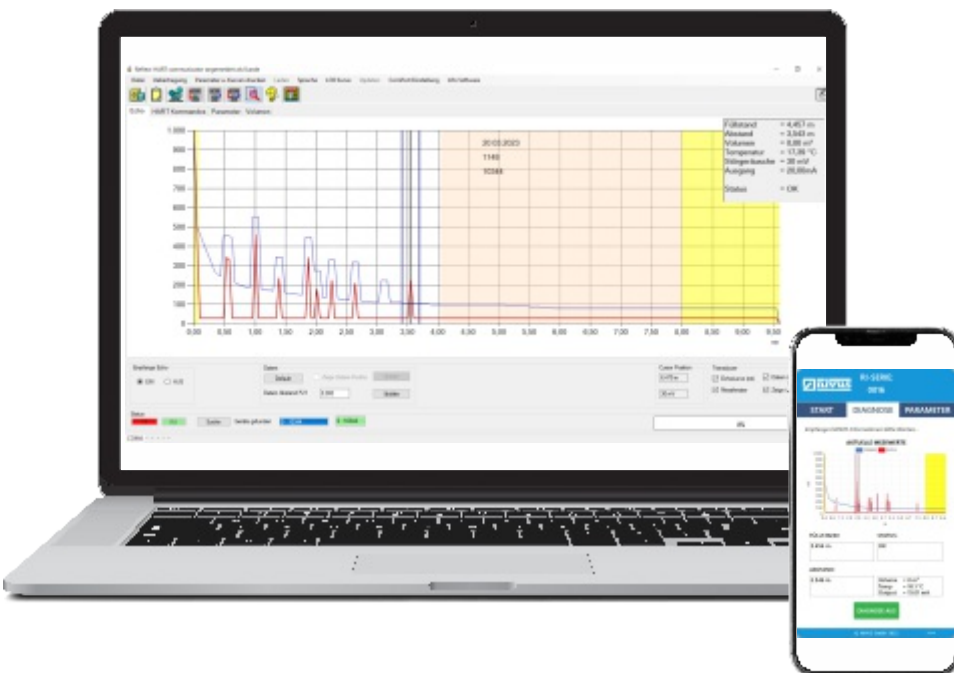


DTM via HART

A HART device DTM (Device Type Manager) is also available for the sensors, with which parameterisation is possible via the manufacturer-independent PACTware adjustment software.

PC Software via HART

Manual false echo blanking can be carried out via PC software if required. In addition, all important parameters for measurement range adjustment can be optimised and documented.





NIVUS GmbH

Im Taele 2
75031 Eppingen, Germany
Phone +49 7262 9191-0
Fax +49 7262 9191-999
info@nivus.com
www.nivus.com

NIVUS AG

Burgstrasse 28
8750 Glarus, Switzerland
Phone +41 55 6452066
Fax +41 55 6452014
swiss@nivus.com
www.nivus.com

NIVUS Austria

Mühlbergstraße 33B
3382 Loosdorf, Austria
Phone +43 2754 5676321
Fax +43 2754 5676320
austria@nivus.com
www.nivus.com

NIVUS Sp. z o.o.

ul. Hutnicza 3 / B-18
81-212 Gdynia, Poland
Phone +48 587 602015
Fax +48 587 602014
biuro@nivus.pl
www.nivus.pl

NIVUS France

12 rue Principale
67870 Bischoffsheim, France
Phone +33 388 999284
info@nivus.fr
www.nivus.fr

NIVUS Ltd.

Head office UK:
Furzen Hill Farm
Coventry Road, Cubbington,
Royal Leamington Spa
Warwickshire, UK, CV32 7UJ
Phone +44 1926 632470
info-uk@nivus.com
www.nivus.com

NIVUS Middle East (FZE)

Prime Tower
Business Bay Dubai
31st floor, office C-3
P.O. Box: 112037
Phone +971 4 4580502
middle-east@nivus.com
www.nivus.com

NIVUS Korea Co. Ltd.

#2301 M-Dong Technopark IT Center,
32 Songdogwahak-ro Yeonsu-gu
INCHEON, Korea 21984
Phone +82 32 209 8588
Fax +82 32 209 8590
jhwon@nivuskorea.com
www.nivuskorea.com

NIVUS Vietnam

238/78 Phan Trung Street,
Tan Tien Ward, Bin Hoa City,
Dong Nai Province, Vietnam
Phone +84 (0)94 2623 979
jhwon@nivuskorea.com
www.nivus.com

Mounting

Mounting is easy via the 1" BSP/NPT thread on the back. The sensors are also optionally available with a 1" front thread made of PVDF.



Benefits FMCW Radar Technology

- No influence by temperature fluctuations, wind, pressure or super-imposed gases
- For applications with foam surface or vortex formation
- Continuous surface detection



LED Indicator

During installation, the LEDs show at which mounting position the sensor gets the best signal. This allows for a comfortable and easy installation of the sensor. In measurement mode, the LEDs also show whether the measurement is working properly.



All in Order



Early Warning



Sensor Maintenance Required

